



H5DATACENTERS.COM

THE TOP 5 | Portland

- 1) 10,000 SF
- 2) Redundant UPS infrastructure
- 3) 100% uptime SLA
- 4) Located outside major flood plains and high risk areas
- 5) Lucrative tax incentives

H5 DATA CENTERS
+1 303.714.7802
info@h5datacenters.com

1233 NW 12th Ave.
Portland, OR 97209

Portland's Leading Data Center

Centrally located in downtown Portland with a variety of connection opportunities and tax incentives, there are so many reasons to choose H5 Data Centers Portland.

Ideal Location for Secure Connection and Savings

This 10,000 SF (with room to expand) data center is situated right between two of the largest connective hubs on the west coast, San Francisco and Seattle. H5 Data Centers Portland's location makes for optimized deployment with low latency. Additionally, the added bonus of tax breaks for computer hardware makes Portland is a reliable and safe location with added savings.

Stringent Security Protocols for Peace of Mind

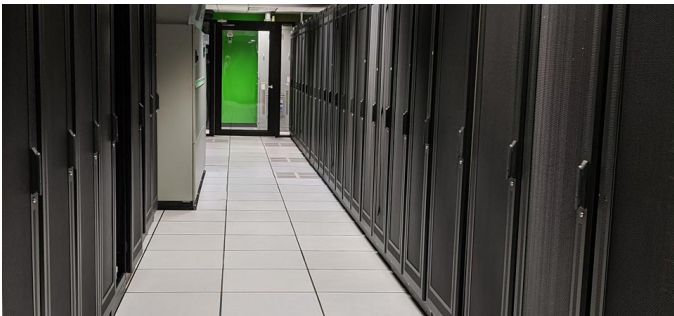
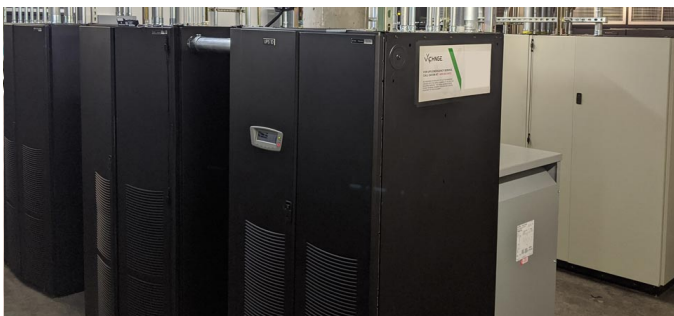
24x7x365 manned security, CCTV surveillance, and multi-layered authentication allows you to sit back and focus on growing your business while your data remains secure. We provide the reliability needed for the rest of your operations to thrive.





The Ideal Location for West Coast Optimization

LET'S TALK: 303.714.7802



The Capacity & Features You Want

Facility Features

- 10,000 SF data center has room to expand and a variety of connectivity options
- Layered security: mantraps, biometrics, key cards, CCTV, on-site officers
- SOC 2 Type II, ISO 27001, PCI-DSS compliance
- 100% uptime SLA

Infrastructure Features

- N+1 built in redundancies for most components
- 4-20 kw per cabinet
- Cold isle containment

Network Features

- Various connectivity options including direct, long-haul, dark fiber, IP transit, VoIP and Private/Public cloud
- Diverse fiber points of entry, carrier neutral
- All forms of copper and fiber connections available

Other Features

- 24x7 remote hands services
- State sales tax incentives on computer hardware
- Limited exposure to risks of natural disasters
- Positioned between two of the west coast's largest tech hubs, Seattle and San Francisco



H5 DATA CENTERS