



**H5DATACENTERS.COM**

## **THE TOP 5** | New York

- 1) 240,000 square-foot building
- 2) Access to more than 40 networks
- 3) Access to DE-CIX New York IX and the NetIX Internet exchanges
- 4) Reliable: 100% uptime since 2012
- 5) Located in lower Manhattan, at 325 Hudson St.

### **CONTACTS FOR H5 DATA CENTERS**

**Phone:** (646) 812-3600

**Email:** [info@h5datacenters.com](mailto:info@h5datacenters.com)

**Address:** 325 Hudson St.  
New York, NY 10013

## Trusted New York Data Center That Supports Carriers, Cloud Service Providers, and Leading Enterprises

H5 Data Centers' New York data center is located inside 325 Hudson Street, a 240,000 square-foot mission critical facility along the Hudson Fiber Corridor in lower Manhattan. The New York data center features N+1 emergency generators and access to more than 40 networks and multiple Internet exchanges including [DE-CIX New York](#) and [NetIX](#).

### Access to Carriers and Service Providers

H5 Data Centers New York is a prime location for interconnect. The data center can serve as a diverse site to 60 Hudson and has over 40 on site carriers as well as access to the DE-CIX New York IX and the NetIX Internet exchanges, cable companies and ISPs such as RCN, Starry, and Altice.

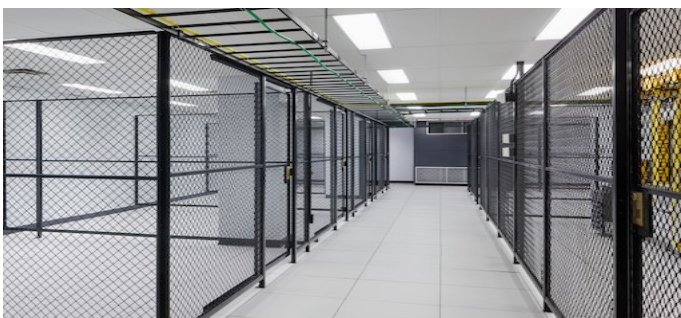






## Enterprise Data Center with Carrier Hotel Connectivity

**LET'S TALK:** (646) 812-3600



### Facility Features

- 240,000 square-foot building
- Ability to support high-density deployments
- 24x7 on-site building security
- 24x7 camera monitoring
- Dual-authentication access controls
- SOC 2 Type II audits
- ISO27001 certifications

### Infrastructure Details

- Multiple MWs for ConEd
- N+1 emergency generators
- Over 15,000 gallons of diesel fuel storage
- A/B AC UPS power
- N+1 CRAC units
- Energy-efficient in-row cooling units with cold aisle containment

### Network Options

- Access to more than 40 networks
- Access to the DE-CIX New York IX and the NetIX Internet exchanges
- Access cable companies and ISPs such as RCN, Starry, and Altice
- Diverse Points of Entry (POEs) access
- Expansive north and south risers with pre-constructed conduit infrastructure

### Other Features

- A13' slab-to-slab floor heights
- 150 lbs/SF floor loading capabilities
- Dry-pipe, dual-interlock, pre-action fire suppression system
- 8,000 lbs. freight elevator and secure loading dock to support easy move-ins
- Outside the 500-year floodplain

