



**H5DATACENTERS.COM**

## **THE TOP 5** | New Jersey

- 1) 38,000 SF Data Center
- 2) 24x7x365 on-site support
- 3) Redundant power infrastructure
- 4) Roof Right access
- 5) Hot/Cold isle containment

H5 DATA CENTERS

+1 303.714.7802

info@h5datacenters.com

200B Meadowlands Pkwy  
Secaucus, NJ 07094

## **H5 New Jersey: Connecting The East Coast**

Located just outside of New York City, H5 Data Centers' New Jersey facility is primed to provide IT support all along the eastern seaboard.

Built to support customer growth and continuity, New Jersey serves as a cloud and interconnection exchange point for low latency in all business operations.

To maintain the highest standard of security, our New Jersey location undergoes rigorous annual audits like SOC2 Type II and PCI-DSS.

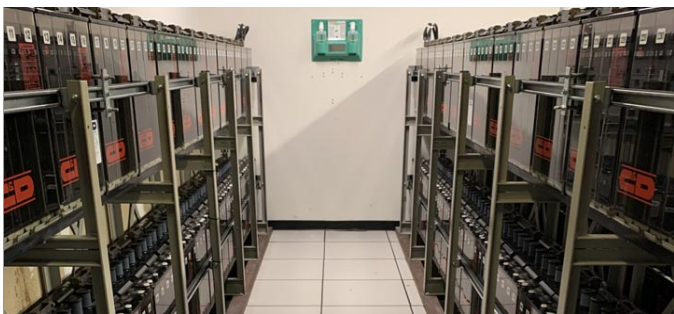
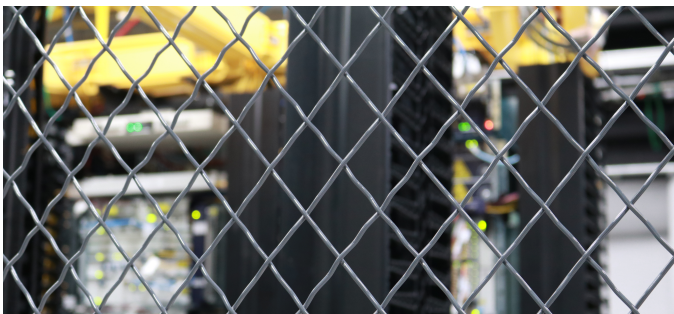
## **Prime Location To Support One Of The Largest Markets In The World**

New Jersey is positioned in a thriving data center market. It's proximity to New York provides vital support to mission-critical operations and a more favorable business environment.



## Fully Secure And Reliable New Jersey Data Center

LET'S TALK: 303.714.7802



### The Capacity & Features You Want

#### Facility Features

- 38,000 SF of available data center space
- Positioned in a low risk area for natural disasters
- 100% uptime SLA

#### Security Features

- ISO 1200:2013 security certification
- Multi-layered security measures including biometrics and man traps
- 24x7 CCTV surveillance

#### Network Features

- 10 on-net carriers available
- Dedicated fiber optic pathways for diverse points of entry
- All forms of copper and fiber connections available
- Organizational requirements for hyperscale data transfer

#### Other Features

- Cold isle containment
- N+1 built in redundancies
- 2.5 MW of backup generator power with automatic transfer
- Easy access to major hyperscale public clouds

#### Ideal Location in Downtown Secaucus

- Low risk of natural disasters
- A short distance from Newark airport and Manhattan



H5 DATA CENTERS